

NOTES :

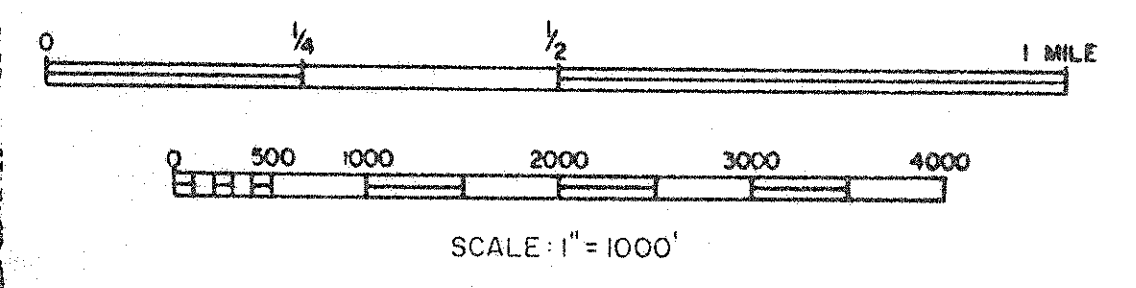
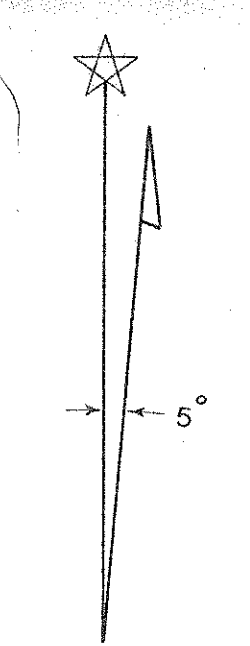
1. TOPOGRAPHIC CONTOUR INTERVALS ARE 5' DATUM IS MEAN SEA LEVEL ELEVATION.
2. THE AERIAL CONTOURS ILLUSTRATE THE HEIGHT LIMITATIONS WITHIN EACH ZONE
3. A SLOPE SUCH AS 20:1, EXPRESSES THE HORIZONTAL DISTANCE OF 20:1 TO THE VERTICAL DISTANCE OF 1'.
4. EXISTING TOPOGRAPHIC SYMBOLS ARE THOSE USED BY THE U.S. GEOLOGICAL SURVEY.
5. IN THOSE AREAS WHERE EXISTING TERRAIN OR TREES PENETRATE ONE OR MORE OF THE IMAGINARY SURFACES THE HEIGHT OF STRUCTURES SHALL BE RESTRICTED ONLY TO THE HEIGHT OF TREE CANOPY WHICH PROVIDES A NATURAL SHIELD TO THE STRUCTURE.

LEGEND

- EXIST. RUNWAY (OCT. 1978)
- TOPOGRAPHIC CONTOURS 1125
- AERIAL CONTOURS 1300

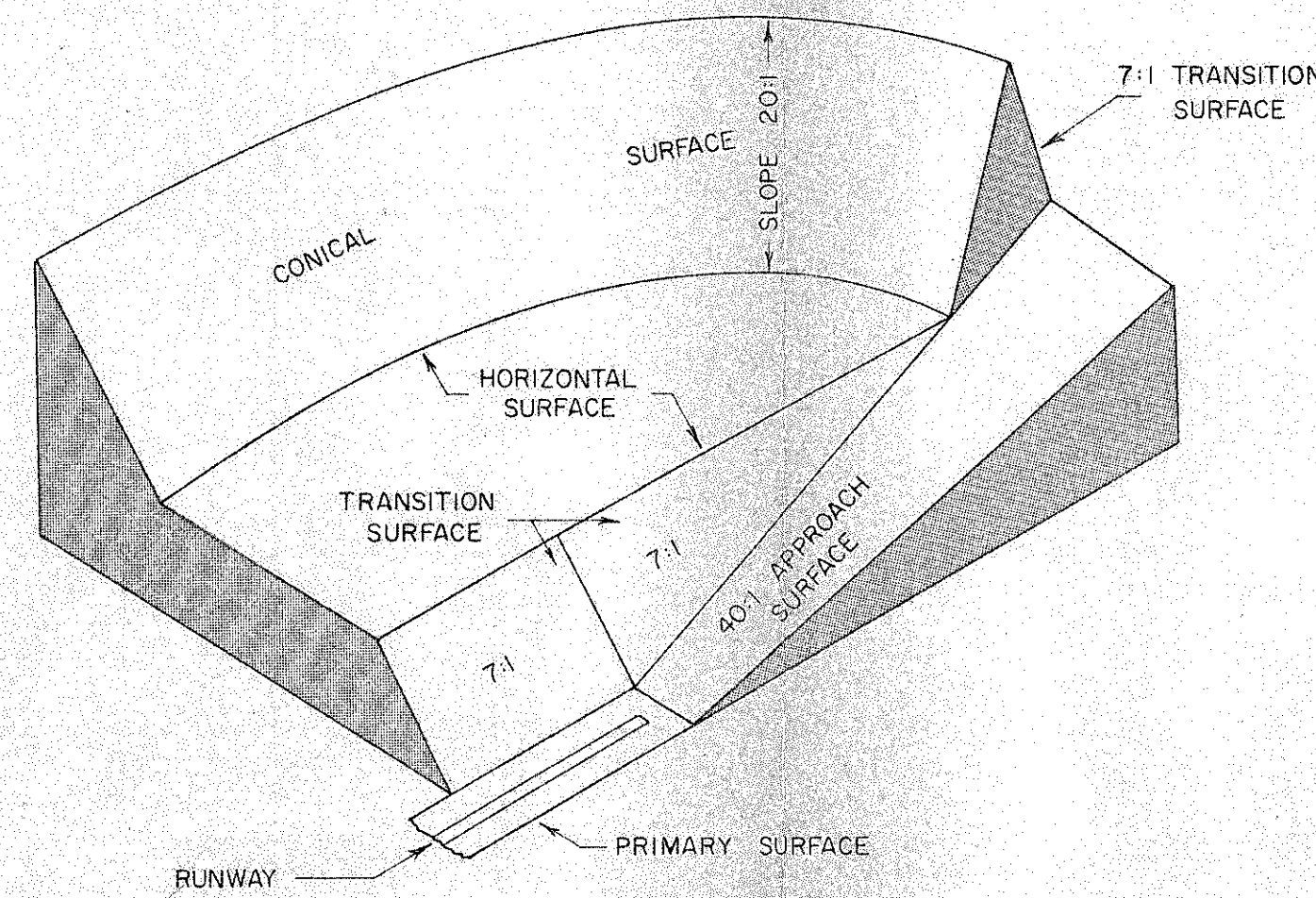
I hereby certify that this plan, specification or report was prepared by me or under my direct supervision and that I am a duly Registered Professional Engineer under the laws of the State of Minnesota.

Howard A. Kuusisto
 DATE Oct 11, 1978 REG. NO. 4738



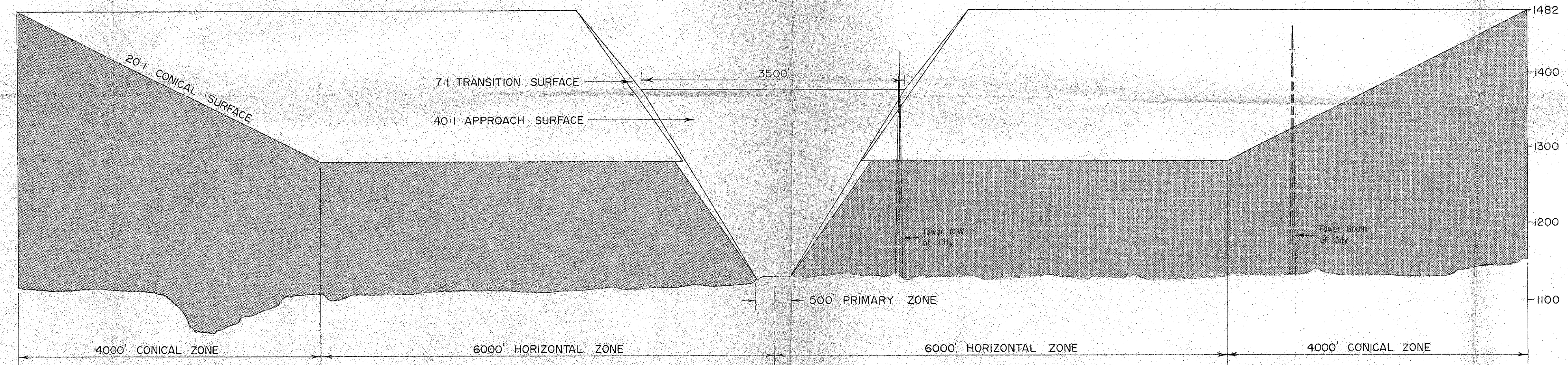
LITTLEFORK, MINNESOTA	
AIRSPACE	
ZONING PLAN	
HOWARD A. KUUSISTO	
CONSULTING ENGINEERS	ST. PAUL, MN.
SHEET 1 OF 3 SHEETS	
OCT. 1978	

MDA approval on this
 AERO COPY



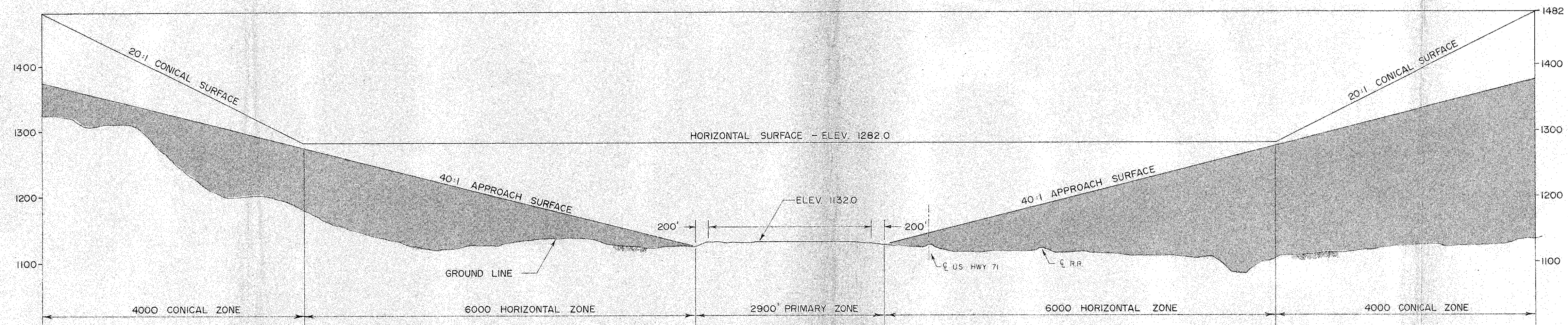
PERSPECTIVE VIEW SHOWING
IMAGINARY SURFACES

NO SCALE



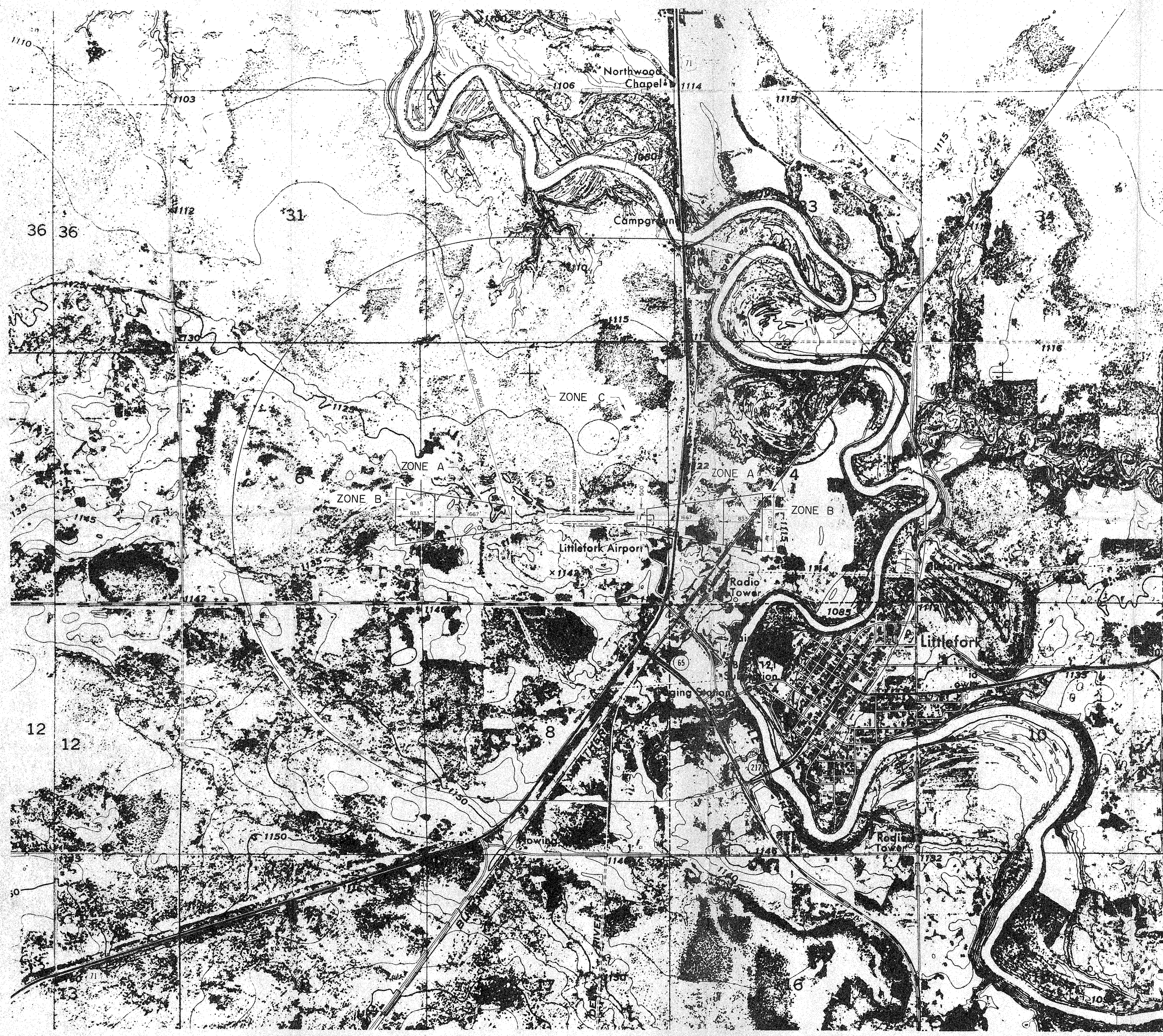
SECTION B-B

SCALE: 1" = 1000' HORZ.
1" = 100' VERT.



SECTION A-A

LITTLEFORK, MINNESOTA		
Survey by		Revised
Designed by	AIRSPACE SECTIONS	
Drawn by BKA		
Approved by Hak		
HOWARD A. KUUSISTO		
CONSULTING ENGINEERS		ST. PAUL, MINN.
SHEET 2 OF 3 SHEETS		OCTOBER 1978

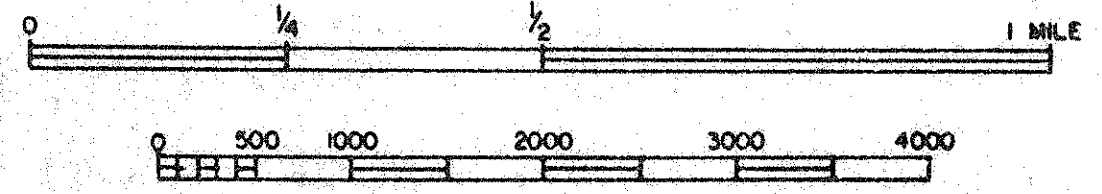
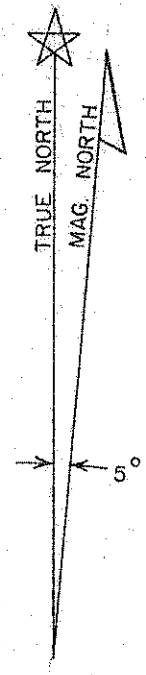


NOTES:

1. TOPOGRAPHIC CONTOUR INTERVALS ARE 5' DATUM IS MEAN SEA LEVEL ELEVATION.
2. EXISTING TOPOGRAPHIC SYMBOLS ARE THOSE USED BY THE U.S. GEOLOGICAL SURVEY.

LEGEND

- EXIST. RUNWAY (OCT 1978)
- TOPOGRAPHIC CONTOURS 1125



SCALE: 1" = 1000'

LITTLEFORK, MINNESOTA		
	LAND USE ZONING PLAN	
Drawn by BKA		
Approved by HAK		
HOWARD A. KUUSISTO		
CONSULTING ENGINEERS		ST. PAUL, MINN.
SHEET 3 OF 3 SHEETS		OCT., 197